


SMHW30

SANY Material Handling Machine

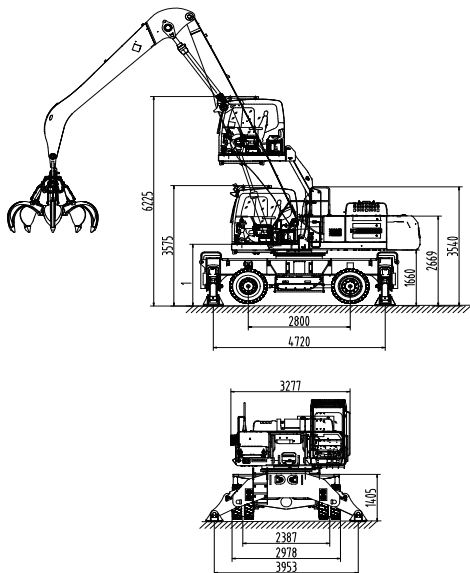
30-series material handlers are mainly suitable for all kinds of bulk material handling the machine is light and flexible with stable performance and high work efficiency.

- 
- 1 Hydraulic system**
Independent researched and developed electronically controlled positive flow hydraulic system, fuel consumption is 10% lower than that of previous ones.
 - 2 Power system**
engine and hydraulic pump curves perfectly match, system simulation reduces fuel consumption in the working area.
 - 3 Control program**
engine automatic idle, multi-speed adjustable, throttling loss reduced by 60%.
 - 4 Larger grab weight**
a single grab capacity up to 4tons, according to different cargo, the efficiency reaches 100 ~ 200 tons/hour.
 - 5 Faster response**
the response time of each action is as low as 300ms.
 - 6 Tire chassis**
Travel speed 20km/h, easy to move.

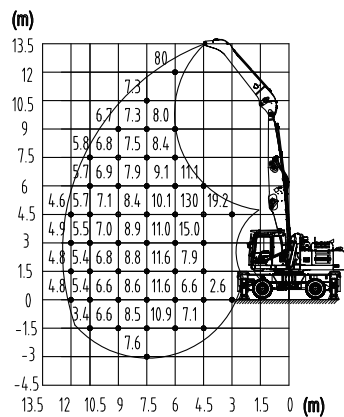
► Product Parameters

Technical Parameter					Configuration Parameter				
ITEM			UNIT	SMHW30	CONFIGURATION		UNIT	SMHW30	
Power System	Engine	Model	-	Mitsubishi D06FRC	Hydraulic System	Stick Cylinder	-	Sany	
		Rated power	kW/rpm	147/2100		Max. System Pressure	MPa	34.5	
		Torque	Nm/rpm	750/1350		Hydraulic Oil Tank	L	230	
		Emission	-	com III	Slewing Gear	Slewing Bearing	-	Sany	
		Oil Tank Capacity	L	465		Max. Rotating Speed	rpm	8	
					Cabin	Cabin Lift Height	mm	2650	
Chassis	Track Width		mm	2387	Basic Parameters	Boom Configuration	m	12	14
	Wheel Base		mm	2800			m	Boom 7.3 Boom 8.6	
	Support width (lengthways)		mm	4750			m	Stick 5.1 Stick 5.6	
	Support width (crosswise)		mm	4140		Max. Operating Radius	m	10.5	13.5
	Turning Radius		mm	8000		Max. Operating Height	m	12	13.5
	Max. Travelling Speed		km/h	20		Max. Operating Depth	m	-3	-3
Hydraulic System	Type Of Control		-	Electronically Controlled Positive Flow System		Max. Operating Radius (Grab Not Included)	t	4.6	3.4
	Main Pump	Model	-	Rexroth					
		Rated Flow	L/min	2×260					
	Main Valve		-	Kawasaki					
	Reducer		-	Sany					
	Boom Cylinder		-	Sany					

► Dimensions



SMHW30 Lift capacities of material handler
(Boom 7.3m, Stick 5.1m, Unit:t)



SMHW30 Lift capacities of material handler
(Boom 8.6m, Stick 5.6m, Unit:t)

